

STEELBEAST®

JEI
Solutions
Built for Industry

RAIL BULL

TRACK WELDING CARRIAGE WITH OSCILLATOR



The Rail Bull is a track welding carriage designed to produce butt and fillet welds with or without oscillation.

The carriage can work in PA (flat), PB (horizontal vertical), PC (horizontal), PF (vertical up), and PG (vertical down) welding positions.

Rail Bull moves along either rigid or semi-flexible track.

Both types of tracks are fixed to flat or curved ferromagnetic surfaces by means of dual magnetic units.

The minimum curvature radius required is 5 m (16 ft).

APPLICATIONS

- Trailer manufacturing
- Truck tanks
- Oil tanks
- Water storage tanks
- Pressure vessels
- Vessel overlay/Hard facing
- Bridge girders
- Structural steel
- Structural towers
- Panel welding
- Transformers
- Shipyards
- Any application demanding long, continuous welds

CALL 01706 229 490 TO BOOK YOUR DEMONSTRATION NOW OR VISIT WWW.STEELBEAST.CO.UK





Continuous welding



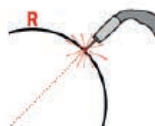
Horizontal speed 0–120 cm/min



Vertical speed 0–110 cm/min



Linear oscillation with trapezoid, triangle and straight line paths

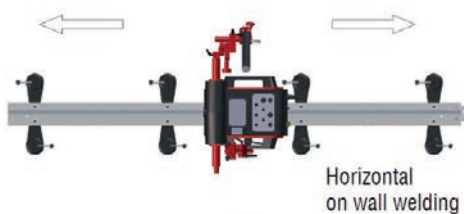


Min. path convex radius 5000 mm



Min. path convex radius 5000 mm

VERSATILITY OF APPLICATIONS INCLUDING OUT-OF-POSITION USE



Horizontal on wall welding



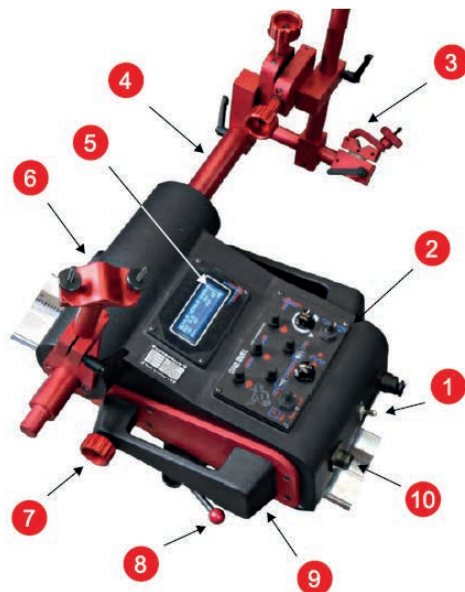
Multi surface welding



Horizontal welding



Vertical welding

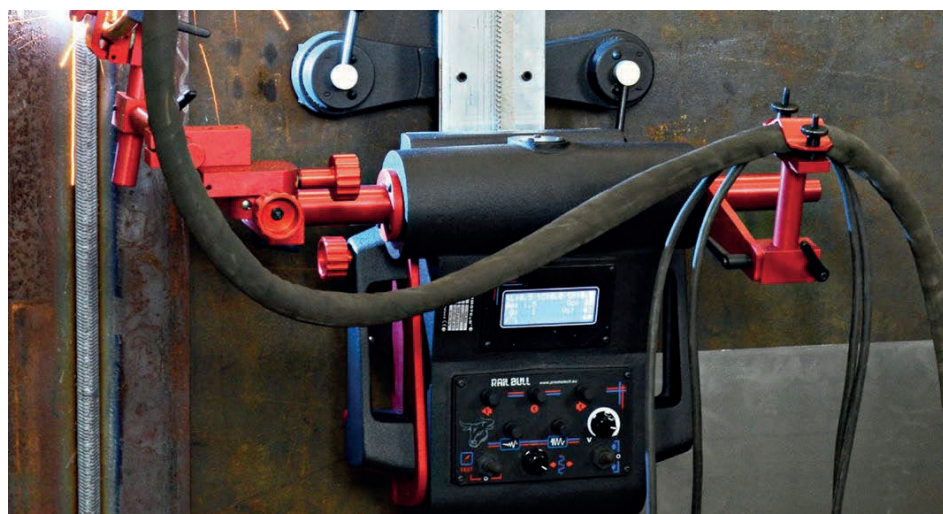
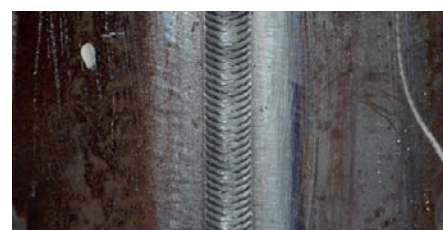
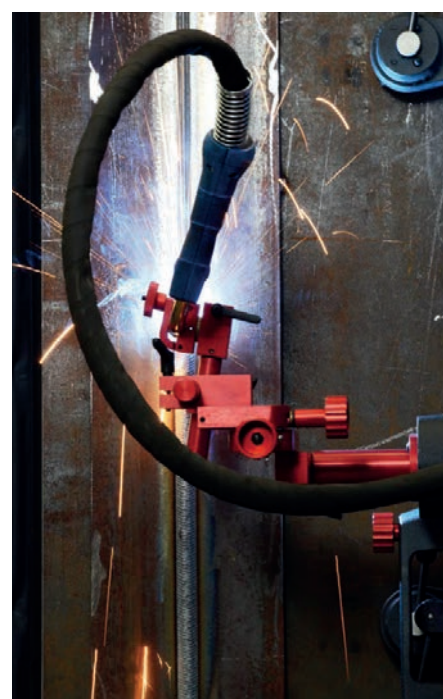
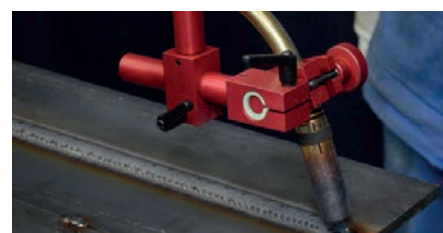


1. Power switch
2. Control panel
3. Torch holder with clamp
4. Oscillator arm
5. Display
6. Cable anchor
7. Drive clutch knob
8. Mounting lever
9. Carrying handle
10. Arc ignition socket

CALL **01706 229 490** TO BOOK YOUR DEMONSTRATION NOW OR VISIT **WWW.STEELBEAST.CO.UK**

PRIMARY FEATURES AND BENEFITS

- Compact, lightweight design with durable aluminum cast housing
- Convenient power supply 115-230V 50/60Hz
- Quick clamping torch holder mechanism for different types of MIG/MAG torches with diameters of 16-22 mm (0.63 – 0.87"); up to 35 mm (1.38") option
- Precise torch adjustment with screw drive cross slide
- Ready to work in both vertical and horizontal positions
- Multifunctional LED display (process parameters & warnings)
- Consistent heat input reduces distortion
- Reduce wasted filler metal – eliminates over welding
- Automatic ARC ON/OFF initiates welding and travel, simultaneously
- Closed loop position control system based on electrical motor with encoder, ensures increased accuracy of speed and positioning
- Improves working environment - removes operator from heat and fumes
- Linear torch oscillator to produce weave welds
- Menu in English (other languages on request)
- Rack and pinion drive
- Continuous welding
- Rigid rail track system



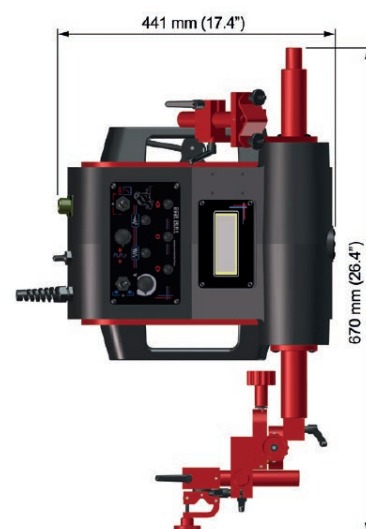
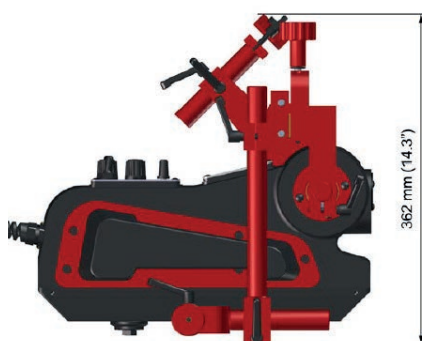
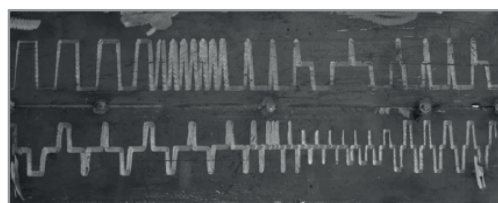
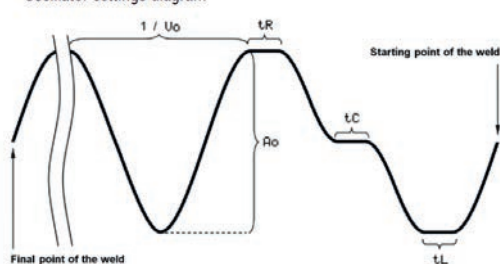
CALL **01706 229 490** TO BOOK YOUR DEMONSTRATION NOW OR VISIT **WWW.STEELBEAST.CO.UK**

RAIL BULL TECHNICAL SPECIFICATIONS

RAIL BULL - TECHNICAL SPECIFICATIONS

Voltage	1~ 115-230 V, 50-60 Hz
Power	100 W
Welding positions	
Horizontal	PA (flat), PB (horizontal vertical), PC (horizontal)
Vertical	PF (vertical up), PG (vertical down)
Minimum track curvature radius	5 m (16 ft)
Torch type	MIG/MAG
Torch diameter	16-22 mm (0.63-0.87"); up to 35mm (1.38") option
Minimum workpiece thickness	5 mm (0.20")
Horizontal pulling force	350 N
Vertical pulling force	150 N
Cross slide adjustment range	0-35 mm (0-1.38") up-down, left-right
Horizontal speed	0-120 cm/min (0-47.2 in/min)
Vertical speed	0-110 cm/min (0-43.3 in/min)
Oscillation type	linear
Oscillation path	trapezoid, triangle, straight line
Oscillator arm stroke	0-100 mm (0-3.9")
Oscillation width	0-50 mm (0-1.9")
Oscillation speed	0-1500 mm/min (0-59.0 in/min)
Oscillation delay	at centre and on ends 0-5 s
Maximum oscillator pulling force	100 N
Weight	20 kg (44 lbs)

Oscillator settings diagram



CALL **01706 229 490** TO BOOK YOUR DEMONSTRATION NOW OR VISIT **WWW.STEELBEAST.CO.UK**

STEELBEAST® STANDARD ACCESSORIES



Power Cord 3m (10 ft)



KBL-0466-17-00-00-0
Dual Arc Ignition Cable of 6.5 m (21 ft)



UCW-0476-20-00-00-0 Torch Holder
Short Rod Clamp Assembly



UCW-0482-17-00-00-0
Cable Anchor

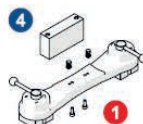
SEMI FLEXIBLE TRACK



Semi flexible track enables usage on surface with a radius of curvature above 5m.



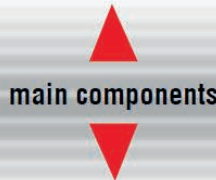
WSP-0523-12-01-00-0
Track Support for Semi Flexible Track



DYS-0482-15-01-01-0
Bracket for Semi Flexible Track

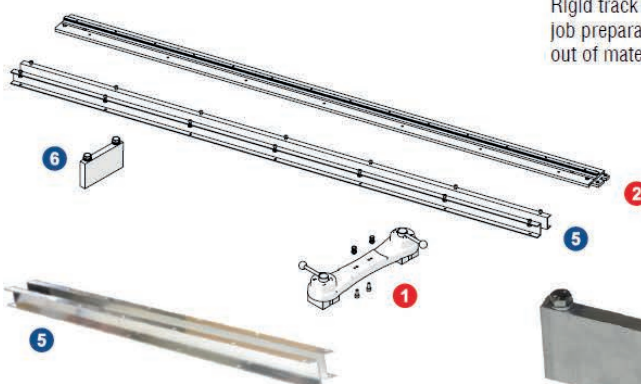


ZSP-0475-56-00-00-0
Track Dual Magnetic Unit



PRW-0482-15-05-00-0
Semi Flexible Track

RIGID TRACK



Rigid track allows easy job preparation from out of material.



WSP-0523-13-01-00-0
Rigid Track Up-grade Set incl.
stiffeners, screws, washers, nuts



WSP-0523-13-02-00-0
Track Support for Rigid Track



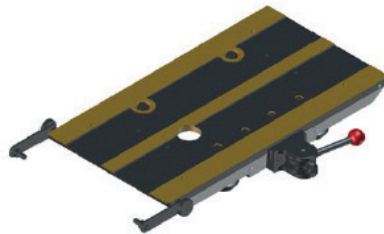
CALL 01706 229 490 TO BOOK YOUR DEMONSTRATION NOW OR VISIT WWW.STEELBEAST.CO.UK

OPTIONAL ACCESSORIES

FOR A VARIETY OF APPLICATIONS



PKT-0341-13-00-00-0
Gear Rack Adjustment Tool



PEP-0482-18-00-00-0
Transport Attachment



ZCS-0476-06-01-00-0
16-22mm Torch Clip



ZRZ-0466-19-00-00-0
22-35mm Torch Clamp



THE RAIL BULL WELDING CARRIAGE IS SUPPLIED IN A METAL BOX INCLUDING:

- Welding Carriage
- Metal box
- Cross slide assembly
- Short rod torch holder with clamp
- Cable anchor
- Power cord 3m (10ft)
- Arc ignition cable of 6.5cm (21ft)
- 3mm hex wrench
- 4mm hex wrench
- Operator's manual

Rail Bull features
user-friendly
control panel



CALL **01706 229 490** TO BOOK YOUR DEMONSTRATION NOW OR VISIT **WWW.STEELBEAST.CO.UK**