



Ready for the future

Founded in 1946, ALMI has steadily evolved into a highly automated company. Boasting efficient, fast and high-quality production, our ISO 9001:2008 certification ensures consistent and accurate process control across ALMI. ALMI is committed to continuing this trend by constantly developing new products, using the latest technologies. ALMI helps you make more profit. In the past, today and in the future!



Does cutting precise pipe sections for welding consume too much time?

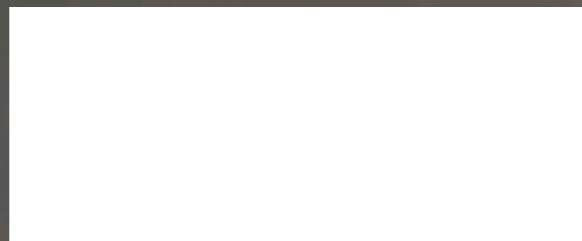
ALMI Pipe Grinders & Pipe Notchers

The art of making technology work



JEI SOLUTIONS LTD

Unit 21 Empire Bus Park T:+44 1706 229490
Enterprise Way F:+44 1706 830496
Burnley, Lancashire E: sales@jeisolutions.co.uk
United Kingdom W: www.jeiuk.com



[youtube.com/wwwalmini](https://www.youtube.com/wwwalmini)

ALMI pipe notchers

ALMI pipe grinders



AL1, AL2, AL3

AL1-2E, AL1-2U

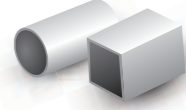
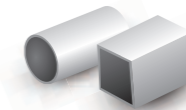
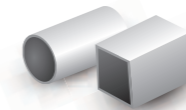
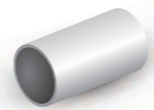
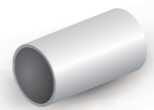
ALU

AL100U-01

AL100U-02

AL150

Pipe section options



Right/variable angle



Eccentric grinding and notching



Pipe diameter*

AL1	27,9 mm 3/4"
	34,8 mm 1"
	42,8 mm 1 1/4"
AL2	49,0 mm 1 1/2"
	61,0 mm 2"
AL3	42,8 mm 1 1/4"
	49,0 mm 1 1/2"

27,9 mm 3/4"
34,8 mm 1"
42,8 mm 1 1/4"
49,0 mm 1 1/2"
61,0 mm 2"

From
27,0 mm 3/4"

20,0 mm - 76,1 mm

20,0 mm - 76,1 mm

20,0 mm - 114,3 mm

Maximum wall thickness

4 mm
3 mm SS

5 mm
4 mm SS

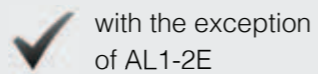
4 mm
(3 mm SS)

N/A

N/A

N/A

Sink outflow



Grinding belt



100 mm x 2000 mm

100 mm x 2000 mm

150 mm x 2000 mm

Handwheel/lever



Lever

Lever & handwheel

Lever & handwheel

Electric operation



Three-year warranty**



Dust extraction



Optional

Optional

Optional

* Other sizes available on request

** Three-year warranty at registration. Normal warranty of one year.

Productivity

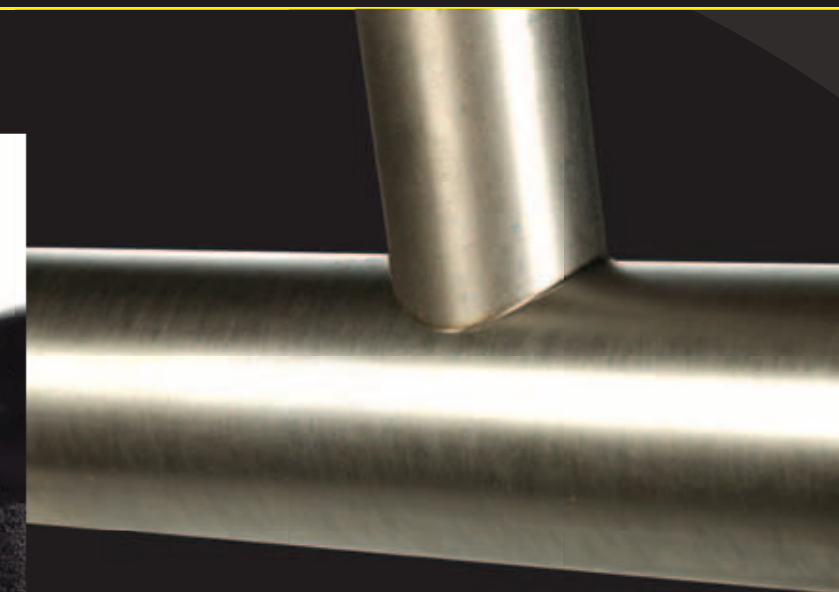
A series of high-performance pipe notchers. ALMI pipe notchers can be used for cutting precise cutouts in pipes of different diameters quickly and easily, without the need for changing parts for each diameter.

A fraction of the price

Unlike punch-cutting machines (Ironworkers), the ALMI pipe notcher is always ready to use, for a fraction of the price.

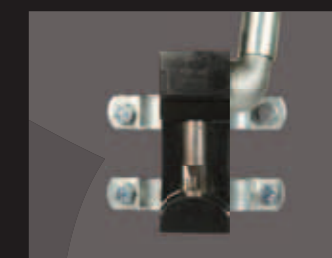
Simple operation

The hand-operated pipe notchers come with a lever for notching pipes with little effort. Two models with electric motor are available for large production series.



The benefits

- High productivity
- Small investment
- Fast and easy operation
- Ideal for making double corner joints
- Also for sink outflow



AL1

AL2

AL3

AL1-2E

AL1-2U

ALU

External pipe diameters

27,9 mm 3/4"
34,8 mm 1"
42,8 mm 1 1/4"

49,0 mm 1 1/2"
61,0 mm 2"

42,8 mm 1 1/4"
49,0 mm 1 1/2"

27,9 mm 3/4"
34,8 mm 1"
42,8 mm 1 1/4"
49,0 mm 1 1/2"
61,0 mm 2"

27,9 mm 3/4"
34,8 mm 1"
42,8 mm 1 1/4"
49,0 mm 1 1/2"
61,0 mm 2"

External pipe diameters for sink outflow

—

—

—

—

From 27 mm

From 27 mm

Electric drive

—

—

—

230/400/575 volt

230/400/575 volt

—

Maximum wall thickness

4 mm / 3 mm SS

4 mm / 3 mm SS

4 mm / 3 mm SS

5 mm / 4 mm SS

5 mm / 4 mm SS

4 mm / (3 mm SS)

Weight

8 kg

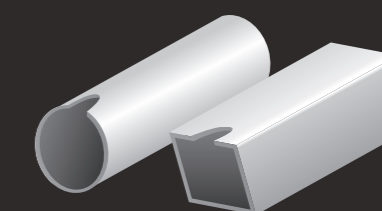
15 kg

15 kg

87 kg

93 kg

7 kg





**Working on making your dreams and
that of others come true.**
Good preparation is the foundation of good welded joints.

The art of making technology work

Any angle and diameter

Enhance the quality of your welded structures through proper preparation. Milling pipes is expensive and time-consuming, but cutting translates into shorter preparation times and lower production costs. The ALMI pipe grinder can cut square, rectangular and round pipes with different wall thicknesses and is suitable for all common types of materials.



Grinding rollers can be changed without tools.

Simple operation

Different grinding roller diameters available for each machine. Rollers are very easy to change. The ALMI belt tensioning system simplifies tensioning of the grinding belt. The entire machine can be operated/adjusted using the hexagonal spanner supplied with the machine.

The benefits

- Grinds any desired diameter
- Grinds all common types of materials
- Suitable for pipes and sections
- Fast and cost-effective
- Precise
- Sustainable
- Grinds at any angle between 30° and 90°
- Pipe grinder and belt grinder in one
- Deburring table on top of the machine
- Connection points for dust extractor



Pipe grinder and belt grinder in one

The innovative ALMI pipe grinders (except the HSX) can also be used as a belt grinder. The machine's operating mode can be changed with the flip of a switch.

A suitable grinder for each application

AL100U-01

- Belt: 100 x 2.000 mm
- Motor: 3 kW
- Belt speed: 30 m/sec.
- Grinding diameters: 20 mm - 76.1 mm
- Grinding angle: 30° - 90°
- Weight: 190 kg
- Dimensions: 1450x1150x650 mm
- Lever operation

AL100U-02

- Belt: 100 x 2,000 mm
- Motor: 3 kW
- Belt speed: 30 m/sec.
- Grinding diameters: 20 mm - 76.1 mm
- Grinding angle: 30° - 90°
- Weight: 220 kg
- Dimensions: 1450x1150x650 mm
- Lever and handwheel operation

AL150

- Belt: 150 x 2.000 mm
- Motor: 4 kW
- Belt speed: 30 m/sec.
- Grinding diameters: 20 mm - 114.3 mm
- Grinding angle: 30° - 90°
- Weight: 270kg
- Dimensions: 1450x1200x850 mm
- Lever and handwheel operation



Easy belt loop adjustment

Deburring table on top of the machine Belt grinder on the back

