

STEELBEAST®

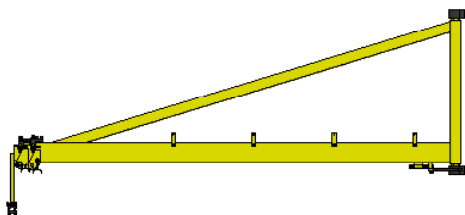
WIRE FEEDER BOOMS

JEI
Solutions
Built for Industry

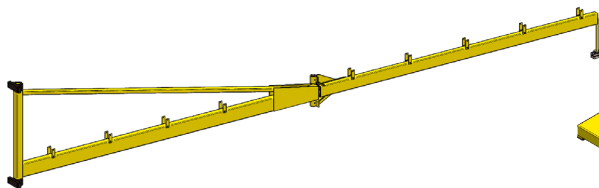
HIGHLY USEFUL DEVICES THAT IMPROVE ERGONOMICS AND INCREASE FLEXIBILITY OF WELDING STATIONS.

MAIN FEATURES AND BENEFITS:

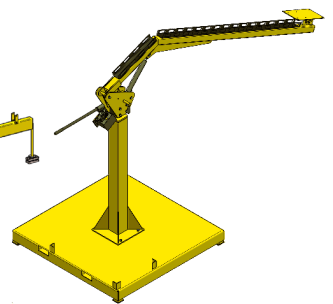
- ✓ Extended workspace
- ✓ More freedom of movement over significantly larger area comparing to the traditional setup
- ✓ No wires on the floor
- ✓ No mess of tangled cables that in extreme cases can be outright dangerous
- ✓ More convenient welding of bigger and complex constructions
- ✓ Simple and robust device
- ✓ Can be easily mounted to the construction elements of the production halls with no need for any additional infrastructure
- ✓ Permissible load: up to 50 kg



Wall mounted telescopic wire feeder boom



Wall mounted pivot wire feeder boom



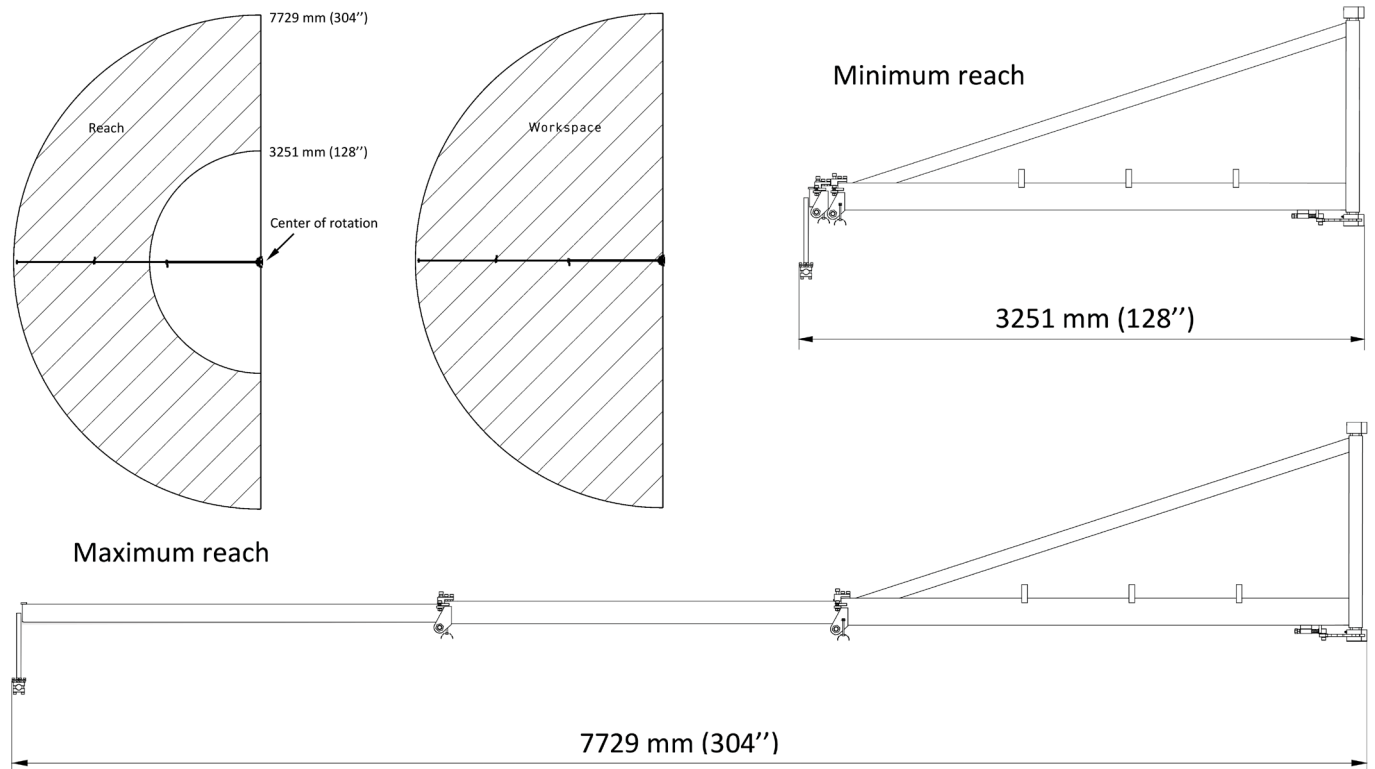
Hydraulic wire feeder boom

CALL **01706 229 490** TO BOOK YOUR DEMONSTRATION NOW OR VISIT **WWW.STEELBEAST.CO.UK**



Wall mounted telescopic wire feeder boom

- Can rotate up to 180° around the vertical axis
- Adjustable reach of the boom from 3251 mm (128") to 7729 mm (304")
- Product code: WSG-0429-10-00-00-0



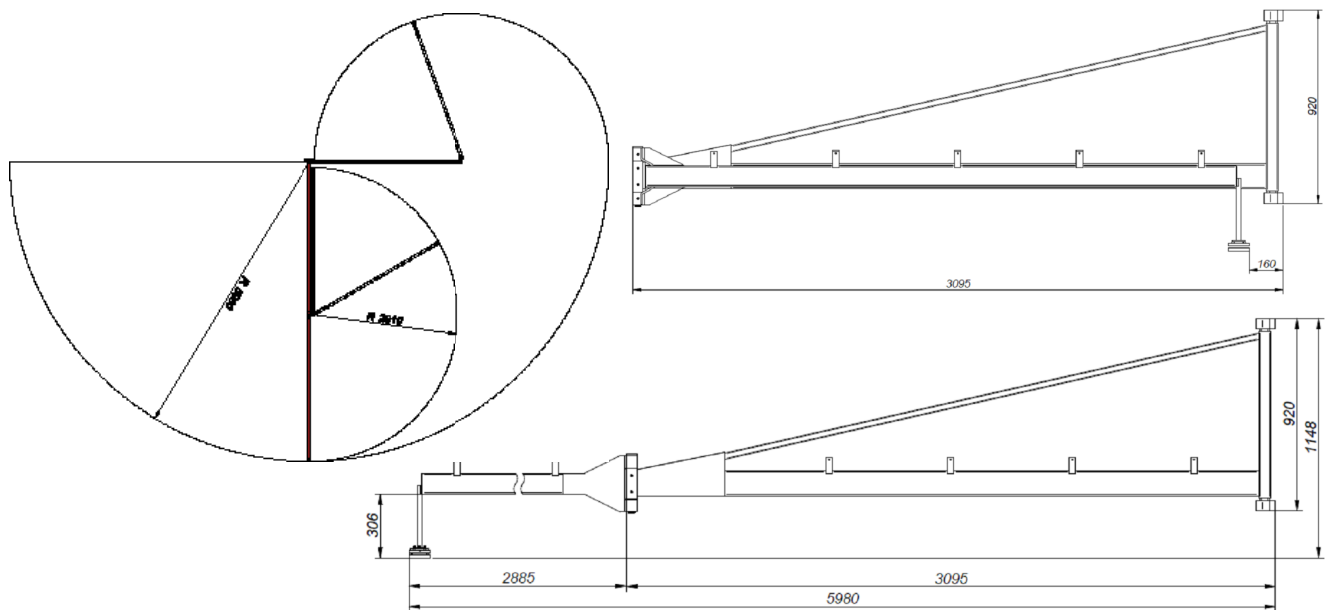
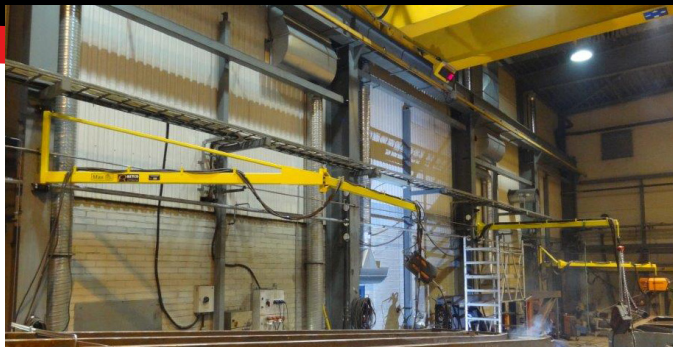
WALL MOUNTED TELESCOPIC WIRE FEEDER BOOM TECHNICAL SPECIFICATIONS.

Reach	3251 – 7729 mm (128–304")
Rotation angle	0-180°
Maximum load (wire feeder, wire)	50 kg (110 lbs)
Minimum dimensions	3251 mm × 1206 mm × 287 mm 128" × 47" × 11"
Maximum dimensions	7729 mm × 1206 mm × 287 mm 304" × 47" × 11"
Weight	98 kg (216 lbs)

CALL **01706 229 490** TO BOOK YOUR DEMONSTRATION NOW OR VISIT WWW.STEELBEAST.CO.UK

Wall mounted pivot wire feeder boom

- Can be rotated up to 180° around the vertical axis
- Additionally the movable arm can be rotated up to 180° around the pivot
- Adjustable reach of the boom from close proximity to vertical axis up to 6000 mm (236")
- Product code: WSG-000002



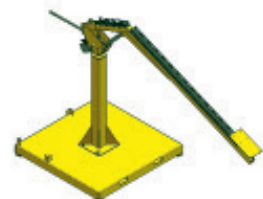
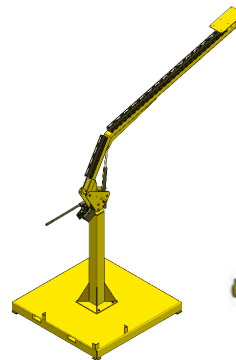
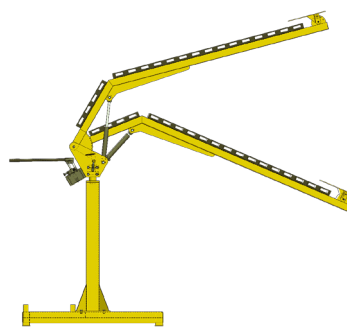
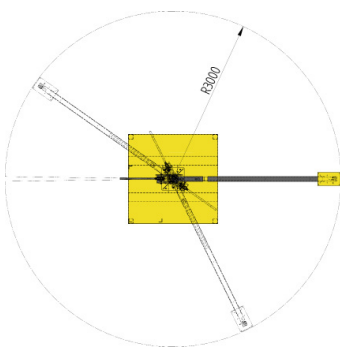
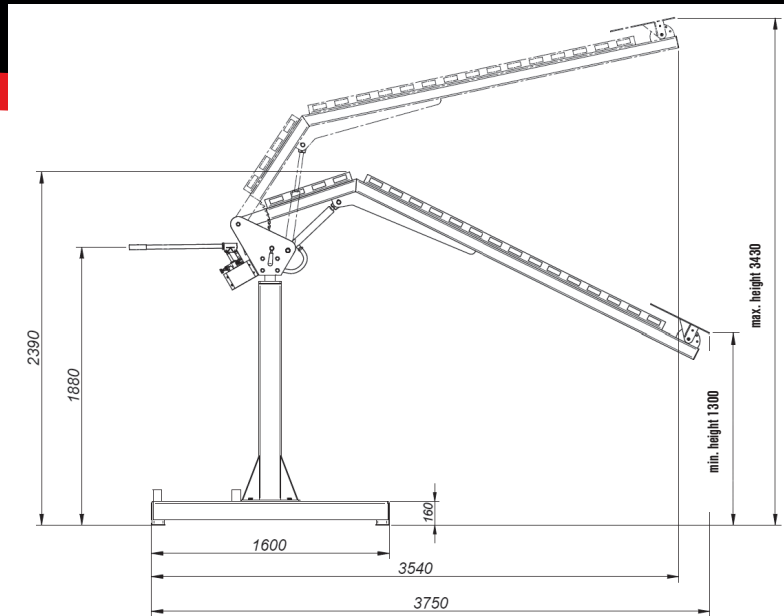
WALL MOUNTED PIVOT WIRE FEEDER BOOM TECHNICAL SPECIFICATIONS

Reach	160 – 5980 mm (6 – 235")
Rotation angle	0-180°
Maximum load (wire feeder, wire)	50 kg (110 lbs)
Minimum dimensions	3095 mm × 1148 mm × 176 mm 121" × 45" × 7"
Maximum dimensions	5980 mm × 1148 mm × 176 mm 235" × 45" × 7"
Weight	100 kg (220 lbs)

CALL **01706 229 490** TO BOOK YOUR DEMONSTRATION NOW OR VISIT **WWW.STEELBEAST.CO.UK**

Hydraulic wire feeder boom

- Can be rotated up to 360° around the vertical axis
- Adjustable height of the boom from 1300 mm (51") up to 3430 mm (135")
- Product code: WSG-000003



HYDRAULIC WIRE FEEDER BOOM TECHNICAL SPECIFICATIONS

Reach	3000 mm (118")
Lifting height	1300 – 3430 mm (51 – 135")
Rotation angle	0-360°
Maximum load (wire feeder, wire)	50 kg (110 lbs)
Dimensions [L x W x H]	3750 mm x 1600 mm x 2390 mm (min) / 3430 mm (max) 148" x 63" x 94" (min) / 135" (max)
Weight	330 kg (733 lbs)

CALL **01706 229 490** TO BOOK YOUR DEMONSTRATION NOW OR VISIT **WWW.STEELBEAST.CO.UK**