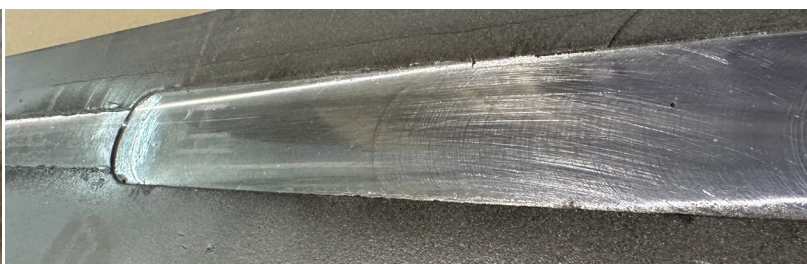


# PORTABLE WELD SHAVER WS-30

## WELD MILLING MACHINE

- ✓ Comfort and ergonomics of work
- ✓ Powerful electric motor
- ✓ Removal of excess weld up to 11 mm high and 30 mm wide
- ✓ Possibility of undercutting to a depth of up to 1.5 mm
- ✓ Continuous milling height adjustment
- ✓ Milling head is equipped with 5 pcs of 2-sided indexable cutting inserts
- ✓ Electronic speed control between 1800–5850 rpm
- ✓ Overload protection

The WS-30 is a rugged, heavy-duty weld shaver engineered for fast, efficient removal of excess weld seams, up to 11 mm high and 30 mm wide. Compact and easy to use, it mills the seam flush with the parent material, creating a smooth, continuous surface ready for painting, coating, or further processing. Powered by a high-performance motor with electronic speed control (1800–5850 rpm), the WS-30 allows precise adjustment to suit different materials and cutting conditions. Its rotary face milling head delivers clean, consistent results without generating heat-affected zones or causing distortion. For maximum control and accuracy, the machine is equipped with a magnetic guide rail system that ensures stable positioning along the workpiece throughout the operation.

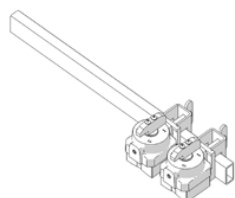


## STANDARD SHIPPING SET:

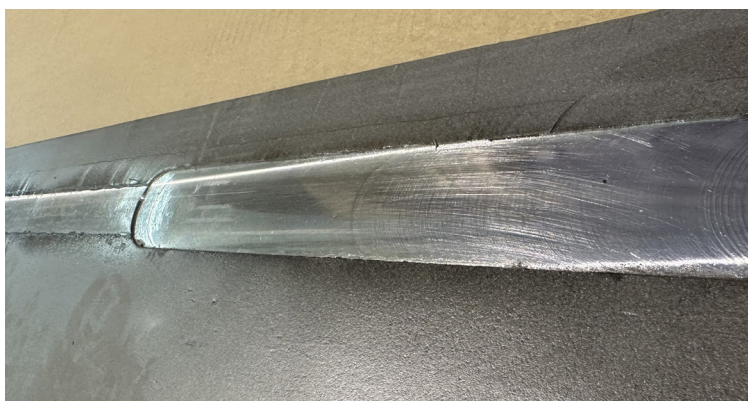
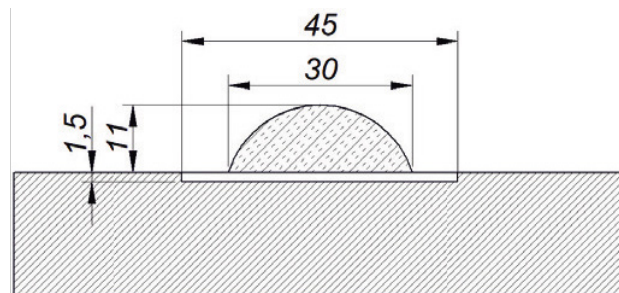
- ✓ Milling machine with rotary head incl. 5 cutting inserts
- ✓ Plastic box
- ✓ Magnetic guiding rail (500 mm long)
- ✓ Grease for screws (5 g, 0.17 oz)
- ✓ Drift
- ✓ Combination wrench 22 mm
- ✓ 10 mm hex wrench
- ✓ Operator's manual

## ACCESSORIES:

- ✓ **BM25IS** Cutting inserts
- ✓ **BM25MH** Milling head



Magnetic guide rail (500 mm)  
**WS30GR** Guide Rail



## THE WS-30 USES A ROTARY FACE MILLING HEAD THAT FEATURES:

- ✓ Lower milling resistance.
- ✓ Less effort for the operator.

WS-30 Portable Weld Shaver	
Voltage	110 V, 240 V (50-60 Hz)
Power	2200 W
Spindle speed (without load)	1800-5850 rpm
Max. milling width	30 mm
Max. milling height	11 mm
Max. milling depth	-1.5 mm
Weight	12.5 kg (27 lb)
Product Code	BMWS30/1

