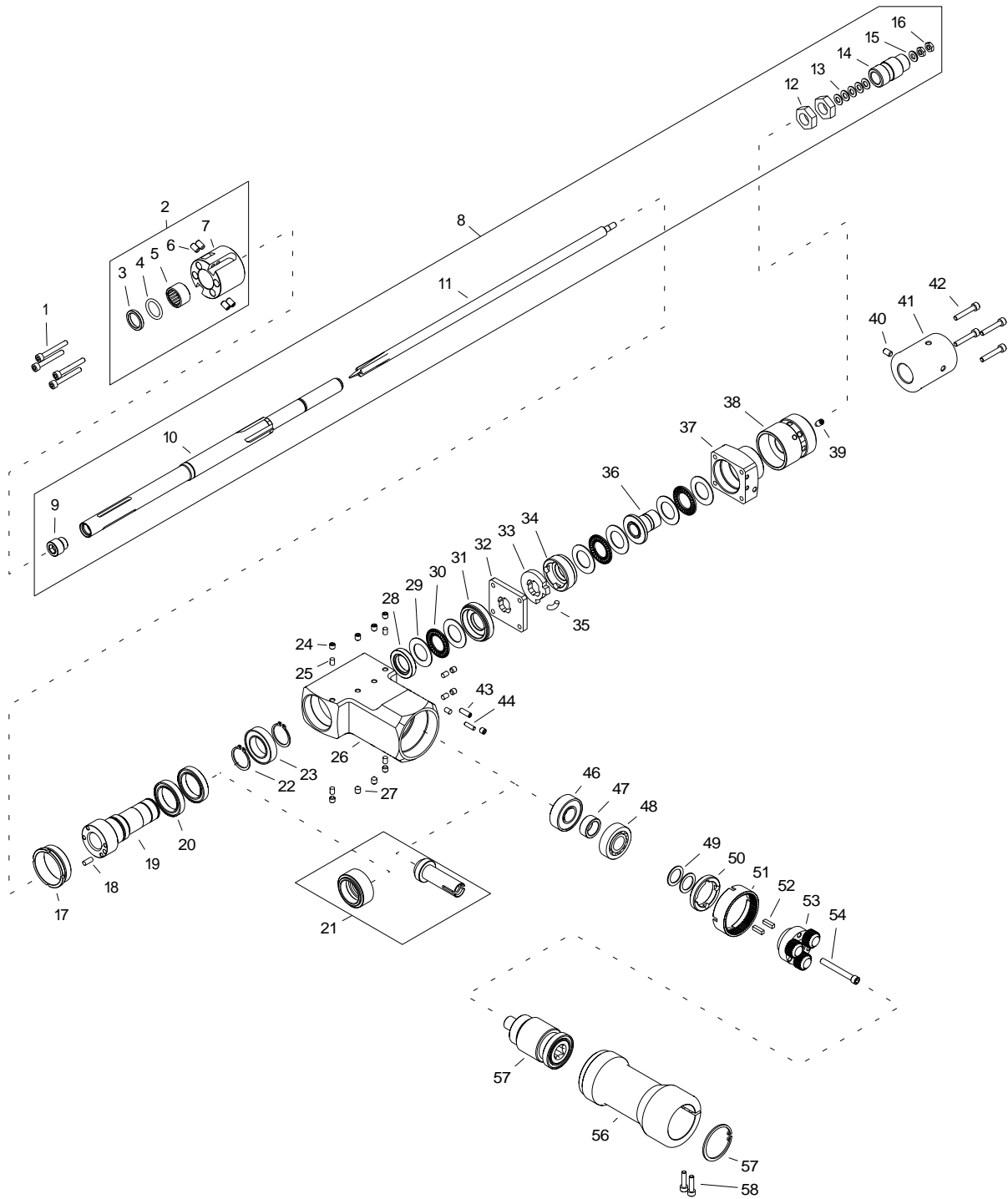


ITEM	PART NUMBER	DESCRIPTION	Q-TY
1	ZST-0567-22-00-00-0	FOAM INSERT ASSY	1
2	SKR-0472-20-01-00-0	METAL BOX	1
3	KLC-0567-16-00-00-0	24 MM FLAT WRENCH	2
4	KLC-000006	3 MM HEX WRENCH	1
5	KLC-000007	4 MM HEX WRENCH	1
6	WBJ-000001	DRIFT	1
7	PRM-0567-17-00-00-1	SPRING GAUGE	1
8	ZST-0567-10-00-00-0	JAW BLOCKS SET	1
9	PJM-000010	TOOL CONTAINER	1
10	PJM-000003	COOLANT CONTAINER	1
11	ZSP-0567-06-00-00-0	AIR MOTOR ASSY	1
12	ZBI-0567-06-02-00-0	DRIVER	1
13	ADT-0567-06-01-00-0	ADAPTER	1

This document is protected by copyrights.

Copying, using, or distributing without permission of JEI Group Ltd is prohibited.

ITEM	PART NUMBER	DESCRIPTION	Q-TY
14	NPD-0472-03-00-00-0	AIR MOTOR ASSY	1
15	ZSP-0567-07-00-00-0	CORDLESS ELECTRIC MOTOR ASSY	1
16	ZBI-0472-22-01-00-0	DRIVER	1
17	WRT-000021	CORDLESS ELECTRIC MOTOR	1
18	AKM-000088	5.2Ah BATTERY	1
19	LDW-000008	BATTERY CHARGER – 230V (CEE)	1
19	LDW-000009	BATTERY CHARGER – 120V (USA)	1
19	LDW-000010	BATTERY CHARGER – 120V (UK)	1
19	LDW-000011	BATTERY CHARGER – 230V (AU)	1
20	ZSP-0567-08-00-00-1	MOTOR ASSY – 230V	1
20	ZSP-0567-08-00-01-1	MOTOR ASSY – 115V	1
21	ZBI-0472-11-02-00-1	DRIVER	1
22	SLN-000238	MOTOR - 230V	1
23	SPR-0567-10-06-02-0	SPRING fi 27.5 (38-42)	2
24	NKD-0567-10-06-10-0	38-42 JAW ASSY	3
25	SPR-0567-10-05-02-0	SPRING fi 25 (34-38)	2
26	NKD-0567-10-05-10-0	34-38 JAW ASSY	3
27	SPR-0567-10-04-02-0	SPRING fi 22.5 (30-34)	2
28	NKD-0567-10-04-10-0	30-34 JAW ASSY	3
29	SPR-0567-10-03-02-0	SPRING fi 17 (26-30)	2
30	SZC-0567-10-03-01-0	26-30 JAW	3
31	SPR-0567-10-02-02-0	SPRING fi 14 (22-26)	2
32	SZC-0567-10-02-01-0	22-26 JAW	3



ITEM	PART NUMBER	DESCRIPTION	Q-TY
1	SRB-000092	HEX SOCKET HEAD CAP SCREW M5x40	4
2	UCW-0567-11-00-00-0	TOOL BIT HOLDER ASSY	1
3	PRS-0567-11-02-00-0	COVER RING 18	1
4	PRS-000349	O-RING 19x3	1
5	LOZ-000168	NEEDLE BEARING 18x24x14	1
6	WKR-000028	HEX SOCKET SET SCREW WITH FLAT POINT M6x10	4
7	UCW-0567-11-01-00-0	TOOL BIT HOLDER	1
8	TRZ-0567-09-00-00-0	EXPANDING MANDREL 18 ASSY	1
9	ZLP-0567-09-02-00-0	PLUG 18	1
10	KRP-0567-09-01-00-0	MANDREL BODY 18 ASSY	1

ITEM	PART NUMBER	DESCRIPTION	Q-TY
11	IGL-0567-09-03-00-0	MANDREL NEEDLE	1
12	NKR-000084	LOW HEX NUT M16x1.5	2
13	SPR-000072	DISC SPRING 6.48x12.7x0.97	5
14	NKR-0567-03-03-00-0	MANDREL NUT	1
15	PDK-000020	ROUND WASHER 6.4	1
16	NKR-000139	LOW HEX NUT M6	2
17	BLD-0567-01-06-00-0	SPINDLE LOCK 1	1
18	KLK-000045	DOWEL PIN 5n6x12	1
19	WRZ-0567-01-01-01-0	SPINDLE	1
20	LOZ-000170	BALL BEARING 30x42x7	2
21	PKL-000055	BEVEL GEAR SET	1
22	PRS-000017	EXTERNAL RETAINING RING 25z	2
23	LOZ-000081	BALL BEARING 25x42x9	1
24	WKR-000029	HEX SOCKET SET SCREW WITH FLAT POINT M6x6	7
25	WKL-0567-02-06-00-0	LOCK INSERT	7
26	KRP-0567-01-12-00-0	BODY	1
27	WKR-000068	HEX SOCKET SET SCREW WITH CONE POINT M6x8	4
28	PDP-0567-01-09-00-0	SPINDLE SUPPORT	1
29	PRS-000330	BEARING RING 21x35x1	6
30	LOZ-000165	THRUST BEARING 20x35x2	3
31	BLD-0567-01-07-00-0	SPINDLE LOCK 2	1
32	BLD-0567-14-00-00-0	EXPANDING MANDREL LOCK 1	1
33	BLD-0567-02-04-00-0	EXPANDING MANDREL LOCK 2	1
34	DYS-0567-02-03-00-0	FEED SPACER	1
35	SPR-0270-11-05-00-0	SPRING	1
36	SRB-0567-02-02-00-0	FEED SCREW	1
37	PKR-0567-02-01-00-0	LOCK COVER	1
38	PKT-0567-02-05-00-0	FEED KNOB	1
39	WKR-000321	HEX SOCKET SET SCREW WITH DOG POINT M6x12	1
40	WKR-000028	HEX SOCKET SET SCREW WITH FLAT POINT M6x10	1
41	PKT-0567-15-00-00-0	MOUNTING KNOB	1
42	SRB-000089	HEX SOCKET HEAD CAP SCREW M5x30	4
43	WKR-000077	HEX SOCKET SET SCREW WITH FLAT POINT M5x16	1
44	KLK-000077	SPRING PIN 4x14	1
45	ZSP-0567-01-02-00-0	PINION SHAFT ASSY	1
46	LOZ-000064	BALL BEARING 17x40x12	1
47	DYS-0567-01-02-01-0	BEARING SPACER	1
48	LOZ-000166	CONE BEARING 17x40x13.25	1
49	PDK-000229	WASHER 17x24x1	2
50	BLD-0567-01-08-00-0	PINION SHAFT LOCK	1
51	KOL-0472-06-02-03-0	RING GEAR	1
52	WPS-0472-01-02-05-0	KEY 4x4x14.5	2
53	PKL-0567-01-03-00-0	PLANETARY GEARBOX ASSY	1
54	SRB-0567-01-10-00-0	HEX SOCKET HEAD CAP SCREW 6x50	1
55	SPZ-0567-01-05-00-0	CLUTCH ASSY	1
56	KRP-0567-01-04-01-0	CLUTCH BODY	1
57	PRS-000026	INTERNAL RETAINING RING 42w	1
58	SRB-000210	HEX SOCKET HEAD CAP SCREW M5x20	2