

Plate & Pipe Bevelling Solutions

JEI
Solutions
.....
Built for Industry



STEELBEAST®

Shaping the way you work with steel

TABLE OF CONTENTS

PRODUCT	PRODUCT DESCRIPTION	PAGE
BM2A	PNEUMATIC RADIUS AND DEBURRING	3
BM5A	PNEUMATIC BEVELLING AND RADIUS MACHINE	4
BM-7	LIGHTWEIGHT PLATE BEVELLING MACHINE	5
BM-18	MULTITASK PLATE AND PIPE BEVELLER	6
BM-18A	PNEUMATIC PLATE BEVELLER	7
BM-20+	PORTABLE PLATE AND PIPE BEVELLER	8
BM-21	INDUSTRIAL PLATE AND PIPE BEVELLER	9
BM-21S	STAINLESS STEEL PLATE AND PIPE BEVELLER	10
BM-25	PLATE BEVELLING MACHINE	11
WS-30	PORTABLE WELD-SHAVING MACHINE	12
SBM-500	STATIONARY BEVELLING MACHINE	13
ABM-14	AUTO-FEED PLATE AND PIPE BEVELLER	14
ABM-28	PORTABLE AUTO-FEED MACHINE	15
ABM-29	A NEW GENERATION AUTO-FEED MACHINE	16
ABM-30	AUTO-TRAVEL TRACKLESS BEVELLER	17
ABM-50	AUTO-TRAVEL DOUBLE-SIDED BEVELLER	18
PB2	COMPACT PIPE BEVELLING	19
PB5	PORTABLE PIPE BEVELLING	20
PB10	HEAVY-DUTY PORTABLE PIPE BEVELLER	21
PB40 PBS	HEAVY-DUTY STATIONARY PIPE BEVELLING	22

STEELBEAST®

BM2A

HANDHELD PNEUMATIC RADIUS AND DEBURRING TOOL



Deburring



Bevel Radius R1.5



Countersinking min. ID 6.8 mm



Deburring Angle 45°



Max deburr width 2 mm

Features & benefits:

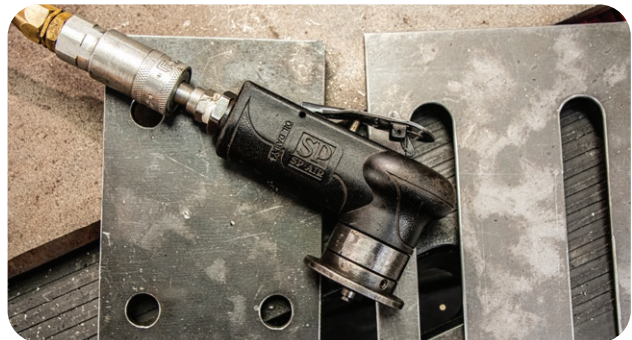
- Weighs only 400 g.
- 5 bar operation.
- Milling head holds both radius & milling inserts.
- Deburr internal holes from a minimum 6.8 mm Ø.
- Deburr sharp edges or create a paint-ready radius edge.



FOR
MORE INFO
SCAN HERE

A quick and easy system
for paint-ready edge
preparation

EASY-RADY



STEELBEAST®

BM5A

**PNEUMATIC BEVELLING AND
RADIUS MACHINE**



Cuts inside circles with a 35 mm Ø or more.



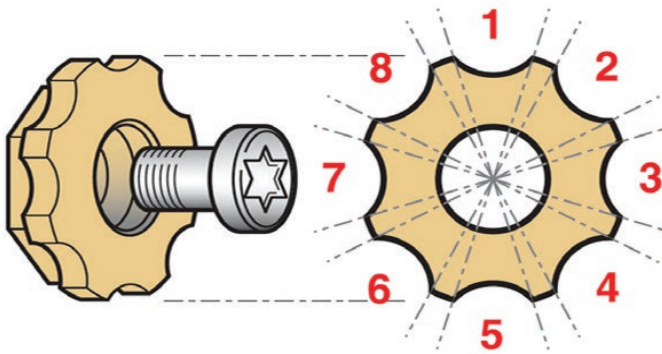
Cuts materials with a minimum 6 mm thickness.



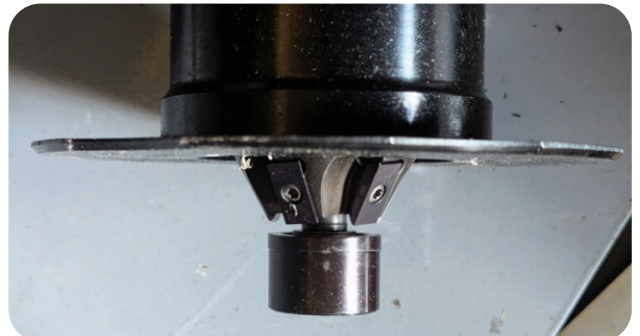
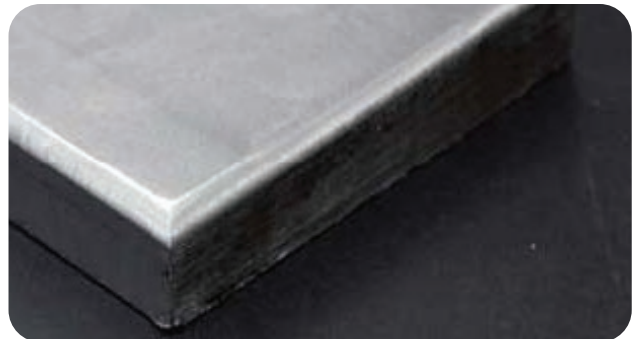
Make blind cuts with a minimum 11 mm depth.

Features & benefits:

- Cuts 2-3R radius chamfers.
- Cuts 2-3R straight chamfers.
- 3 bladed cutting head.
- Patented 8 edged cutters.
- 3.5 R chamfering capacity.
- 7,000 RPM max speed.
- Net Weight 2.8 KG
- Great for all metal fabrication, including shipyards.



PATENTED 8 EDGED CUTTERS



**FOR
MORE INFO
SCAN HERE**

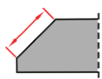
A quick and easy system
for paint-ready edge
preparation

EASY-RADY

STEEL BEAST®

BM-7

LIGHTWEIGHT BEVELLING MACHINE FOR MILLING PLATES



Bevel width up to 7 mm



Top beveling



Bevel angles 45°, 30° (optional)



Bevel radius R2, R3, R4, or R5



Arched edge bevel



Minimum plate thickness 1.5 mm



Countersinking Min ID 35 mm



Pipe OD beveling.



Pipe ID beveling. Min ID 40 mm

Features & benefits:

- Lightweight and compact design
- Ideal for radius beveling R2, R3, R4 or R5
- Small overall dimensions
- Excellent for limited access
- Continuous bevel adjustments.
- One single 45 ° milling head for radius and V bevels.
- The perfect solution for radius edge applying to steel sections before painting, to prevent rust build up on sharp edges.



FOR
MORE INFO
SCAN HERE

A quick and easy system
for paint-ready edge
preparation

EASY-RADY

STEELBEAST®

BM-18

MULTITASK PLATE AND PIPE BEVELLER



Max bevel width 18 mm



Round edges (optional) R2, R3, R4, or R5



Top bevelling



Bevel angles: 22.5°, 30°, 37.5°, 45°, 50°, 55°, and 60°



Minimum plate thickness 2 mm



Arch edged bevelling



Countersinking Min. ID 40 mm



Pipe OD bevelling



Pipe ID bevelling Min. ID 40 mm

Features & benefits:

- Maximum 18 mm bevel width (more than one pass could be required).
- New: more durable milling heads with hexagonal fixing for easy replacement.
- Electronic speed control between 1800–5850 rpm for use on a variety of materials.
- Continuous bevel width adjustment.
- Overload protection to protect the motor.
- Rounding radius R2, R32, R4, R5 on straight and curved edges.
- Optional accessories allow pipe and small plate bevelling.



FOR
MORE INFO
SCAN HERE

A quick and easy system
for paint-ready edge
preparation

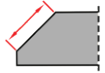
EASY-RADY



STEELBEAST®

BM-18A

PNEUMATIC PLATE BEVELLER



Max bevel width 18 mm



Round edges (optional) R2, R3, R4, or R5



Top bevelling



Bevel angles: 22.5°, 30°, 37.5°, 45°, 50°, 55°, and 60°



Minimum plate thickness 2 mm



Arch edged bevelling



Countersinking Min. ID 40 mm



Features & benefits:

- Powerful pneumatic motor.
- Maximum 18 mm bevel width.
- New: more durable milling heads with hexagonal fixing.
- Easy replacement of milling heads.
- Bevelling milling head is equipped with 5 pcs of 2-sided indexable cutting inserts.
- Continuous milling depth adjustment to fully control the bevelling process.
- Rounding radius R2, R32, R4, R5.
- Creates the perfect radius on straight and curved edges.
- Bevel on holes from 40 mm in diameter.



**FOR
MORE INFO
SCAN HERE**

A quick and easy system
for paint-ready edge
preparation
EASY-RAD

STEELBEAST®

BM-20+

INDUSTRIAL PORTABLE BEVELLER



Max bevel width 21 mm



Facing off



Top bevelling



Bevel angles: 15° - 60°, or 0° (option)



Round plate bevelling (option)



Pipe bevelling

OD 150 - 300 mm (option)

OD 260 - 600 mm (option)

Features & benefits:

- Maximum 21 mm bevel width
- Continuously adjustable bevel angle between 15° and 60° as standard.
- 0° Plate Facing-off (with optional accessory).
- Curved Plate Bevelling (with optional attachment)
- Fitted with two rotary millingheads for smooth and efficient operation.
- Continuous milling depth adjustment to fully control the bevelling process.
- Automatic motor overload protection to prevent damage.
- Optional accessories for machining pipe, round plates, and creating a flat surface at the workpiece (facing off).



**FOR
MORE INFO
SCAN HERE**

STEELBEAST®

BM-21

INDUSTRIAL PLATE AND PIPE BEVELLER



Max bevel width 21 mm



Facing off



Top bevelling



Bevel angles: 0° - 60°



Pipe bevelling

OD 150 - 300 mm (option)

OD 260 - 600 mm (option)

Features & benefits:

- Maximum 21 mm bevel width.
- Monoblock milling head equipped with 10 square inserts makes the process more efficient and reduces fatigue.
- Continuous angle adjustment from 0° to 60°.
- Automatic motor overload protection to prevent damage.
- Quick and simple replacement of milling inserts.
- One universal guide plate for bevelling plates and pipes.
- Fast and easy exchange of inserts without the need of special adjustment.
- Easy setting of bevel angle and bevel width.
- Vibration insulation protects both the operator and electronics against vibration.
- Optional guides for pipe from 260 to 600 mm Ø.



**FOR
MORE INFO
SCAN HERE**

STEELBEAST®

BM-21S

STAINLESS STEEL PLATE & PIPE BEVELLER



Max bevel width 21 mm



Facing off



Top bevelling



Bevel angles: 15° - 60°, or 0° (option)



Pipe bevelling
OD 150 - 300 mm
OD 260 - 600 mm (option)

Features & benefits:

- Guide plate with rollers made of stainless steel to protect the workpiece from contamination.
- Monoblock milling head equipped with 10 square inserts makes the process more efficient and reduces fatigue.
- Easy bevel width set up - 21 mm at 45°.
- Continuous angle adjustment from 0 to 60°.
- Automatic motor overload protection to prevent damage.
- Quick and simple replacement of cutting inserts
- One universal guide plate for bevelling plates and pipes.



Monoblock Milling Head



**Stainless steel guides for
bevelling plate and pipe.**



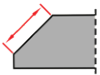
**FOR
MORE INFO
SCAN HERE**



STEELBEAST®

BM-25 / 25S

PLATE BEVELLING MACHINE BM-25S FOR STAINLESS STEEL



Max bevel width 25 mm



Minimum plate thickness 2 mm



Top bevelling



**Bevel angles: 0° - 90°
15° - 75° (recommended)**

Features & benefits:

- Maximum 25 mm bevel width (more than one pass could be required).
- Continuously adjustable bevel angle between 0° and 90° - only one milling head in use.
- Powerful motor with electronic speed control 1800 - 5850 RPM works with various materials.
- Milling head equipped with 5 cutting inserts.
- The face milling method works with a single head allowing less milling resistance and effort.
- Overload protection to prevent motor damage.
- Continuous milling depth adjustment to fully control the bevelling process.
- One milling head for full-range of angles.
- Adjustable handle and grip enables comfortable operation and ergonomics for both left and right-handed people.
- Two possible roller positions (wide and narrow).
- Grip can be rotated through 360°.



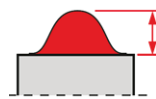
**BM-25S
FOR BEVELLING
STAINLESS STEEL
SCAN HERE**



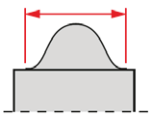
STEELBEAST®

WS-30

WELD MILLING MACHINE



Max. milling height 11 mm



Max. milling width 30 mm



Max. milling depth - 1.5 mm

FOR
MORE INFO
SCAN HERE



Features & benefits:

- Comfort and ergonomics of work.
- Powerful electric motor.
- Removal of excess weld up to 11 mm high and 30 mm wide.
- Possibility of undercutting to a depth of up to 1.5 mm.
- Milling head is equipped with 5 pcs of 2-sided indexable cutting inserts.
- Precision cutting blades for a smooth surface finish.
- Electronic speed control between 1800–5850 rpm.
- Overload protection to prevent damage to the motor.
- Magnetic guide rail (500 mm long).
- Suitable for a variety of materials and applications.



STEELBEAST®

SBM-500

STATIONARY BEVELLING MACHINE



FOR
MORE INFO
SCAN HERE



Max bevel width up to 30 mm



Workpiece height from 3 mm up to 100 mm



Edge beveling



Bevel angles: 15° - 60° continuous adjustment



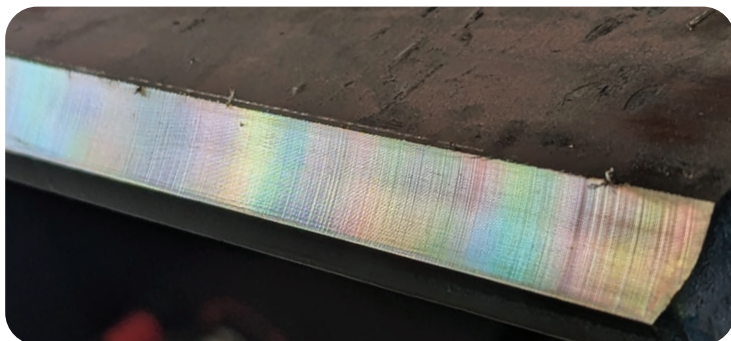
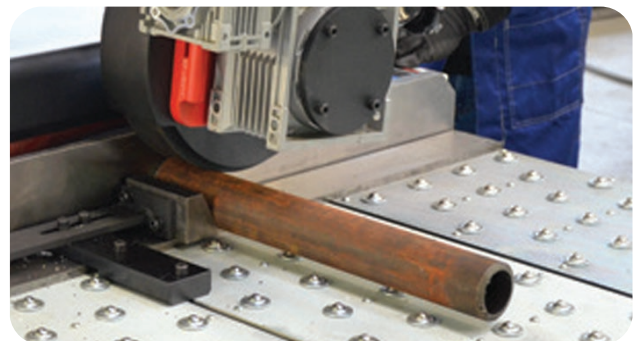
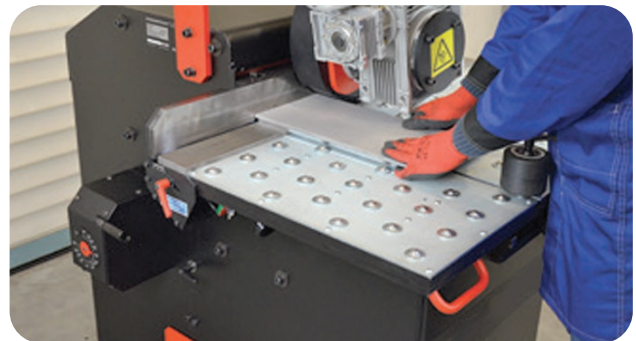
Minimum workpiece width 50 mm
Minimum workpiece length 150 mm



Pipe OD beveling 50 mm - 150 mm (option)

Features & benefits:

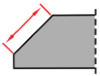
- Precise setting of bevel angle from 15° up to 60° and bevel width of up to 30 mm.
- 3D contact wheel control ensures proper workpiece alignment in relation to the high speed rotary milling head.
- Variable auto-feed to bevel both ferrous and non-ferrous materials.
- Cutting inserts dedicated for optimal performance on different materials.
- Easy access to milling head and cutting inserts.
- Overload protection to prevent motor damage.
- SBM-500 streamlines workflow to maximise your production efficiency.



STEELBEAST®

ABM-14

AUTO-FEED PLATE & PIPE BEVELLER



Max bevel width up to 14 mm



Facing off (optional)



**Min plate thickness 6 mm
Max plate thickness 40 mm**



Minimum plate width 55 mm



Top Beveling



Bottom beveling



Bevel angles: 30° option 22.5°, 25°, 30°, 37.5°, 45°



Round plate beveling (optional)



Pipe OD beveling Min. ID 100 mm

Features & benefits:

- Automatically runs along the edge of a workpiece
- Two optional trolleys increase ergonomics, comfort, and productivity.
- Standard shearing cutter for machining stainless/alloyed steel.
- Two optional dedicated shearing cutters for carbon steel and aluminium.
- Stationary operation is possible for machining small workpieces or pipes with ID>100 mm.
- Additional vertical roller guide enables machining concave edges if curvature radius is 1500 mm or more.
- Low noise.



**FOR
MORE INFO
SCAN HERE**



STEELBEAST®

ABM-28

PORTABLE AUTO-FEED MACHINE



Max bevel width up to 35 mm



Facing off



Plate thickness
Max 35 mm (with optional 36 - 70 mm)



Bevel angle from 60 ° to minus 60 °



Top Bevelling



Bottom bevelling



Clad Removal (optional)
depth up to 5 mm
width up to 25 mm



J-groove beveling (option)

Features & benefits:

- Auto-feed bevelling of steel plates, on the top, face, or bottom edges.
- Continuously adjustable bevel angle between 60 ° and minus 60°.
- No need to flip or rotate heavy material, enhancing safety, and reducing material handling time and expense.
- Maximum bevel width from 28 mm up to 35 mm depending on the bevelled angle.
- Variable feed control for work on a variety of steel grades and thicknesses up to 35 mm (up to 70 mm option available).
- Motor overload protection to prevent motor damage.
- Additional guide tracks can be attached to accomplish the required run length.
- J-groove bevelling available as an option.



**FOR
MORE INFO
SCAN HERE**

STEELBEAST®

ABM-29

A NEW GENERATION AUTO-FEED MACHINE



Top bevelling



Bottom bevelling



Bevel width up to 29 mm



Bevel angles:
Top from 20° - 45°
Bottom from 20° - 45°

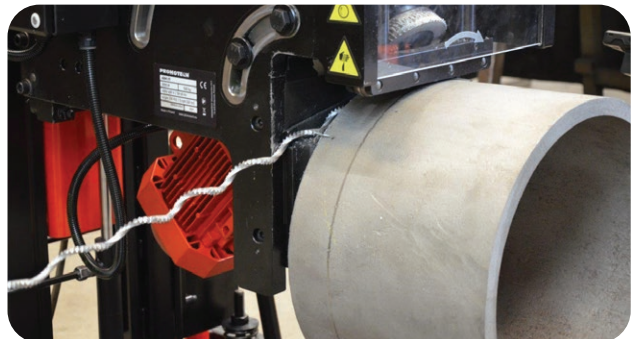
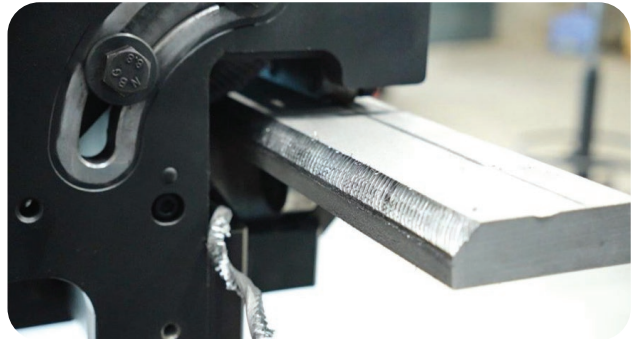
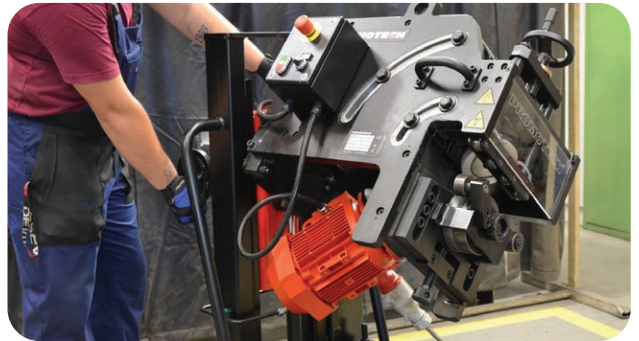


Max plate thickness 50 mm



Pipe OD bevelling Min. ID 150 mm

**FOR
MORE INFO
SCAN HERE**



Features & benefits:

- Heavy-duty beveller which auto travels along the edge of a plate with speeds of up to 1.7 m/min.
- Up to 20 mm bevel width in one run and maximum 29 mm bevel width after multi passes.
- Maximum 29 mm bevel width after multiple passes.
- Continuous milling height/bevel width adjustment.
- Continuous bevel angle adjustment between 20° and 45°
- Integrated trolley to facilitate top and bottom bevelling with height adjustment between 685 mm and 1000 mm.
- Stationary operation for machining small workpieces.
- Pipe machining with minimum ID 150 mm.
- Overload protection.
- Reverse travel mode to free a jammed tool.
- Low noise.



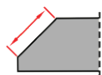
ABM-29

One shearing cutter for machining of a variety of steel grades incl. stainless steel

STEELBEAST®

ABM-30

AUTO-TRAVEL TRACKLESS BEVELLER



Max bevel width up to 30 mm



Facing off



Plate thickness
Max 60 mm



Bevel angle from -70 ° to 70 °



Top Beveling



Bottom beveling

FOR
MORE INFO
SCAN HERE



Features & benefits:

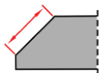
- 4-wheel drive eliminates a need for guide track
- Self-propelled machine for consistent bevel geometry from edge-to-edge.
- Control panel indicates current work mode and gives safety and diagnostic information.
- Capable of producing bevels of up to 30 mm wide.
- Infinitely adjustable bevel angle between -70° and +70°
- Produces double-sided bevels without having to flip the plate enhancing safety and reducing material handling time and expense.
- Feedback-controlled overload system to prevent motor damage.
- Semi-automatic drive stop at plate end.



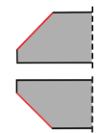
STEELBEAST®

ABM-50

AUTO-TRAVEL DOUBLE-SIDED BEVELLER



**Max bevel width up to 50 mm
/45° up to 66 mm / 15°**



Top Beveling



Bottom beveling



**Plate thickness:
Min 8 mm
Max 80 mm**



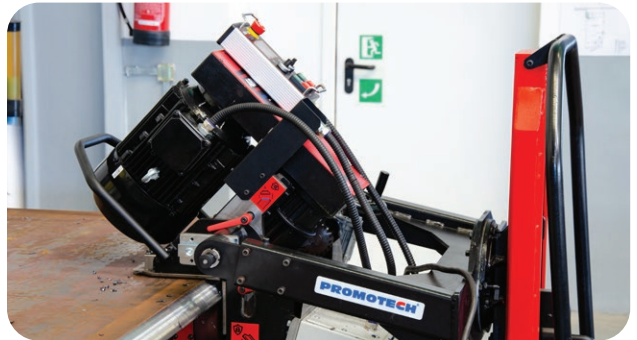
**Bevel angles:
Top 15° to -60°
Bottom 15° to -60°**

**FOR
MORE INFO
SCAN HERE**



Features & benefits:

- Auto-feed machining to increase ergonomics, comfort, and productivity.
- Bevel width up to 50 mm at 45°
- LCD Display show exact bevel geometry and cutting parameters in real time.
- Precise adjustment of spindle speed and feed rate according to material grade, including stainless steel, duplex, aluminium, etc.
- 180° inversion allows double-sided beveling.
- No need to rotate or flip heavy material reduces handling time and expense.
- Versatile and transportable on its own trolley.
- Feedback-controlled overload system to prevent motor damage.

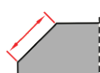
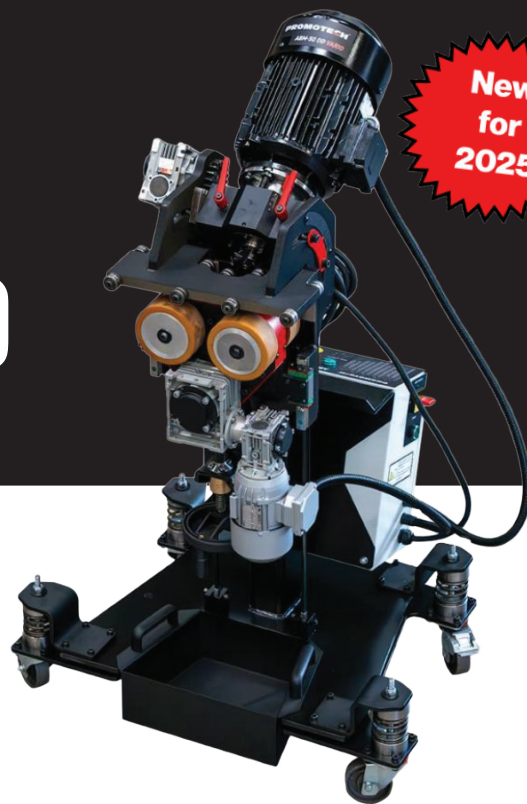


STEELBEAST®

ABM-50 DD VARIO

AUTO-TRAVEL DOUBLE-SIDED BEVELLER

New
for
2025



Max bevel width up to 50 mm
/45°



Top Beveling



Plate thickness:
Min 8 mm
Max 80 mm



Bevel angles:
Top 15° to -70°

Features & benefits:

- Self-propelled machine - moves along the edge of the plate at speeds of up to 1.2 m/min.
- Variable spindle speed - for machining a wide range of steel grades.
- LED monitoring system - indicates the load level to prevent motor damage.
- Top beveling - height adjustment between 840 and 1040 mm from the floor.
- Stationary operation for machining small work pieces.



FOR
MORE INFO
SCAN HERE



STEELBEAST®

PB2

COMPACT PIPE BEVELLING



Max wall thickness up to 8 mm



Pipe OD beveling
Up to 48 mm
Up to 60.3 mm (option)



ID 22-42 mm
15.5 - 22 mm (option)
42 - 58 mm (option)

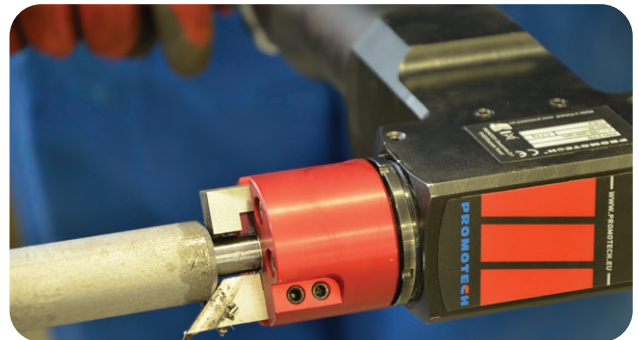


Facing off

Features & benefits:

- Self-centering expandable ID-mounted mandrels provide quick and proper alignment prior to machining operations.
- Innovative expansion sleeves reduce fitting time and improve workflow.
- Standard and custom-made tool bits are available for creating various bevel angles.
- J-bevel tool bits available for high welding efficiency on thicker walled pipe.
- Self-centering expandable ID mounted mandrels enable highly repeatable and consistent fit-up.
- It can be easily deployed from pipe to pipe to reduce cycle times and improve workflow.
- It can be used efficiently by a single operator.

FOR
MORE INFO
SCAN HERE



STEELBEAST®

PB5

PORTABLE PIPE BEVELLING



Max wall thickness up to 12 mm



Pipe OD beveling

**Up to 114 mm and option for up to 140 mm
Up to 60.3 mm (option)**



ID 32-107 mm

**25 - 32 mm (option)
107 - 133 mm (option)**



Facing off

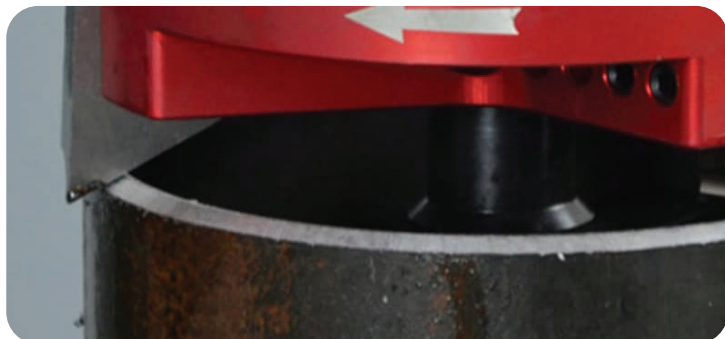


J-groove beveling

Features & benefits:

- Self-centering expandable ID-mounted mandrels provide quick and proper alignment prior to operation.
- Up to three tool bits can be mounted to bevel, face, and counter-bore simultaneously making weld-prep fast and easy.
- Standard and custom-made tool bits are for creating various bevel angles and for V and J-groove beveling.
- Optional small spindle disc and ratchet wrench enable pipe machining in difficult to access and space restricted areas.
- Can be operated with a high-quality powerful pneumatic motor, top quality high torque electric motor, or battery drive.
- Choose from LiHD (High Density Lithium-ion) battery packs with capacities of 4.0 Ah, 5.5 Ah, or 10.0 Ah.

**FOR
MORE INFO
SCAN HERE**



STEELBEAST®

PB10

HEAVY-DUTY PORTABLE PIPE BEVELLER



Max wall thickness up to 15 mm



Pipe OD bevelling



Pipe ID bevelling



**ID 84 - 269 mm
38 - 84 mm (option)
270 - 349 mm (option)**



Facing off

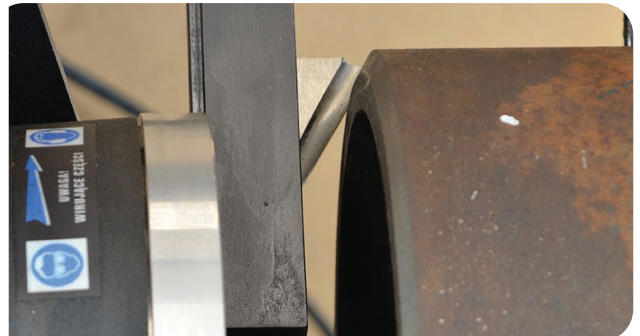


J-groove bevelling

Features & benefits:

- Can be mounted in pipe or tubing with a minimum inside diameter of 38 mm and bevel outside diameters up to 355 mm.
- Available with a powerful pneumatic motor or a high-torque electric motor.
- Spindle disc with two tool bit holders for more stable, less stress-sensitive operation of tool bit.
- Standard and custom made tool bits available
- Can be operated with a high-quality powerful pneumatic motor, top quality high torque electric motor, or battery drive.
- Choose from LiHD (High Density Lithium-ion) battery packs with capacities of 4.0 Ah, 5.5 Ah, or 10.0 Ah.

**FOR
MORE INFO
SCAN HERE**



STEELBEAST®

PB40 PBS

HEAVY-DUTY STATIONARY PIPE BEVELLING



Max bevel width 45 mm



Bevel angle from -60° to 60°



Pipe OD facing off 200 - 1000 mm



J-groove beveling



Min. wall thickness 5 mm



Pipe ID beveling

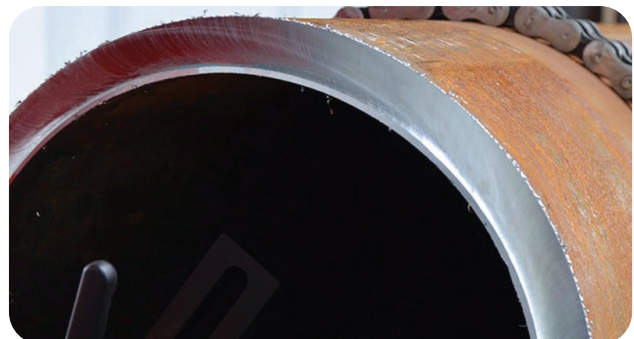


Pipe OD beveling



Facing off

FOR
MORE INFO
SCAN HERE



Features & benefits:

- Continuously adjustable bevel angle between 0° and 60°
- Can bevel pipes made of carbon or stainless steel.
- Maximum allowed pipe weight up to 10,000 kg with optional steel rollers.
- Overload protection to prevent motor damage.
- Fast accurate bevels compared to traditional single-point machining, saving time, money, and improving accuracy.





A whole world of metal fabrication solutions.

Discover our complete range:

**MAGNETIC DRILLING, MILLING,
PUNCHING, SAWING, &
GRINDING MACHINES.**



CUTTING TOOLS BROCHURE



WELDING & CUTTING TRACTORS



UK HQ:

+44 (0) 1706 229490
sales@jeisolutions.co.uk
www.jeiuk.com

Unit 21, Empire Business Park
Enterprise Way
Burnley
Lancashire
BB12 6LT

Authorised distributor:

